



## RELIABLE, ENVIRONMENTALLY, FRIENDLY and COST EFFECTIVE

The POWER MOBILITY series is a state of the art line of advanced GEL sealed batteries designed specifically for mobility and wheelchair applications. POWER BATTERY uses an advanced GEL (patent pending) design which combines the best features of AGM and GEL into one battery. It is highly resistant to vibration, extreme temperatures and rough handling. This advanced design makes the POWER MOBILITY battery the right choice for the high reliability demanded by wheelchair and mobility applications.

Battery Model	Electrical specifications		Dimensions (inches/mm)				Weight lbs/kg	Terminal Type
	Volts	AH @ C/20	Length	Width	Height (case)	Top of Terminal		
WCG-U1	12	33	7.71/196	5.18/132	6.18/157	7.19/183	26.8/12.2	"L" Type
WCG-22	12	55	9.00/229	5.43/138	8.31/211	9.50/241	38.9/17.6	Low "T" Combo
WCG-24	12	76	10.2/259	6.57/167	8.11/206	9.31/237	60.7/27.5	Low "T" Combo
WCG-24C	12	76	10.2/259	6.57/167	8.11/206	8.50/216	60.0/27.2	1/4" C.I.
WCG-27	12	91	12.0/305	6.57/167	8.20/208	9.37/238	72.0/32.7	Low "T" Combo
WCG-31C	12	110	13.5/343	6.76/172	8.50/216	9.31/237	82.0/37.3	1/4" C.I.

## THE POWER MOBILITY GEL ADVANTAGE

- Shock absorbent polypropylene plastic. Resistant to extreme temperatures and vibration.
- Thermally welded cover to case. Eliminates the risk of both acid and electrical leaks.
- Maintenance free construction. Needs no water additions and will not allow electrolyte spills.
- Advanced GEL design – Provides deep cycle capability throughout the life of the battery.
- Oversized internal components. Insures minimal voltage drop and more power availability.

- Industrial grade battery plates.
- Will not develop a memory effect and can be used with opportunity charging.
- Each cell has a pressure release venting system to control gassing, when operated in normal conditions.
- Can be used in any position, except upside down.
- 100% recyclable materials.

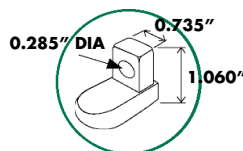


## No transport restrictions

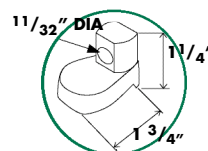
- Surface transport. Classified as non-hazardous material as relates to DOT-CFR Title 49 parts 171-189.
- Maritime transport. Classified as non-hazardous material as per IMDG amendment 27.
- Air transport. Complies with IATA / ICAO, special provision A67.

## Cycle Life vs. Depth of Discharge

15% DOD	2200 cycles
25% DOD	1700 cycles
50% DOD	900 cycles
80% DOD	600 cycles



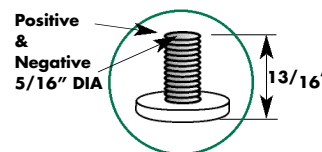
"L" Type



Low "T" Combo



1/4" C.I.



5/16" Studs

## Options

- Battery lifting harnesses.
- Replacement battery cables.
- Other sizes available.



1524-1-0703

**U.S.A.**  
 Power Battery Company, Inc.  
 25 McLean Blvd.  
 Paterson, N.J. 07514-1507  
 Phone: (973) 523-8630  
 Fax: (973) 523-3023  
 E-mail: sales@powbat.com  
 Website: www.powerbattery.com

**CANADA**  
 Power Battery (Iberville) Ltd.  
 770 Thomas Ave.  
 Saint-Jean-sur-Richelieu, Québec, J2X 5E7  
 Phone: (450) 346-3273  
 Fax: (450) 346-8003  
 E-mail: sales@powbat.com  
 Website: www.powerbattery.com

**UK**  
 Power Batteries Ltd.  
 Premier Way, Abbey Park Industrial Estate  
 Romsey, Hampshire, SO51 9AQ  
 Phone: +44 (0)1794 835900  
 Fax: +44 (0)1794 835910  
 E-mail: sales@powbat.co.uk  
 Website: www.powbat.co.uk